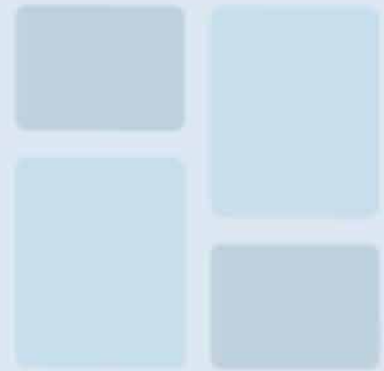




T20 PORCELAIN PAVERS



01 LANDSCAPE PAVERS

02 PATIO SURFACES

03 HOTELS & ROOFTOP HOSPITALITY VENUES

04 ROOFDECKS, BALCONIES & TERRACES

05 PORCELAIN COBBLESTONES

06 INSTALLATION

07 SITE SPECIFIC SOLUTIONS

08 SPECIFICATIONS



STYLE & ELEGANCE IN OUTDOOR PAVING

Create outdoor areas and contemporary landscapes of exceptional beauty without compromising on technical performance.

Archatrak T20 structural strength ¾" thick porcelain pavers offer the perfect balance of exemplary technical features with outstanding aesthetic appeal. Available in slabs, planks and cobblestones in sizes from 8"x 8" to as large as 48"x 96".

- Rich, deep, colors that won't fade.
- Resistant to staining and growth of moss and algae.
- Resistant to freeze/thawing and unaffected by salt.
- Scuff and scratch resistant.
- Exceptionally low maintenance.



01 LANDSCAPE PAVING



Cotto

Construct inspirational landscapes and hardscapes with Archatrak T20 porcelain pavers - more style, richer, deeper colors, more natural features and tonal variation.

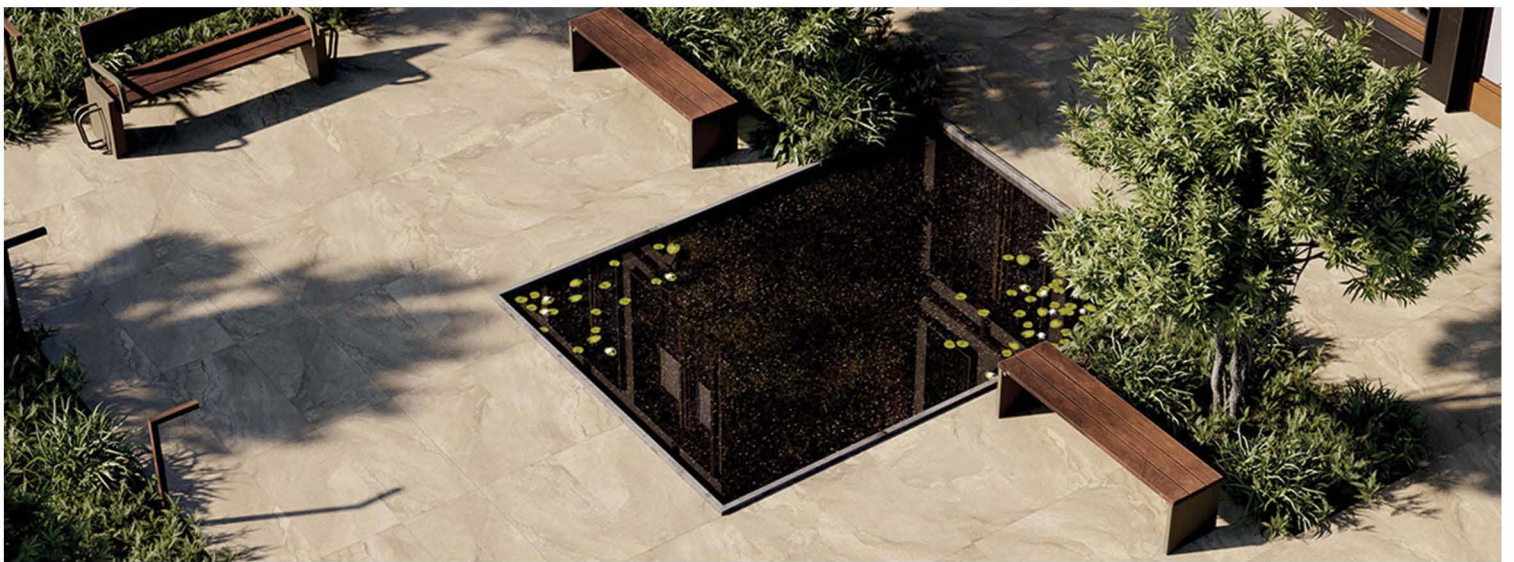
- Highly Stain Resistant
- No Freeze/thaw Cracking
- No Fading or Color Change
- Lower Maintenance



Piedmont Dark



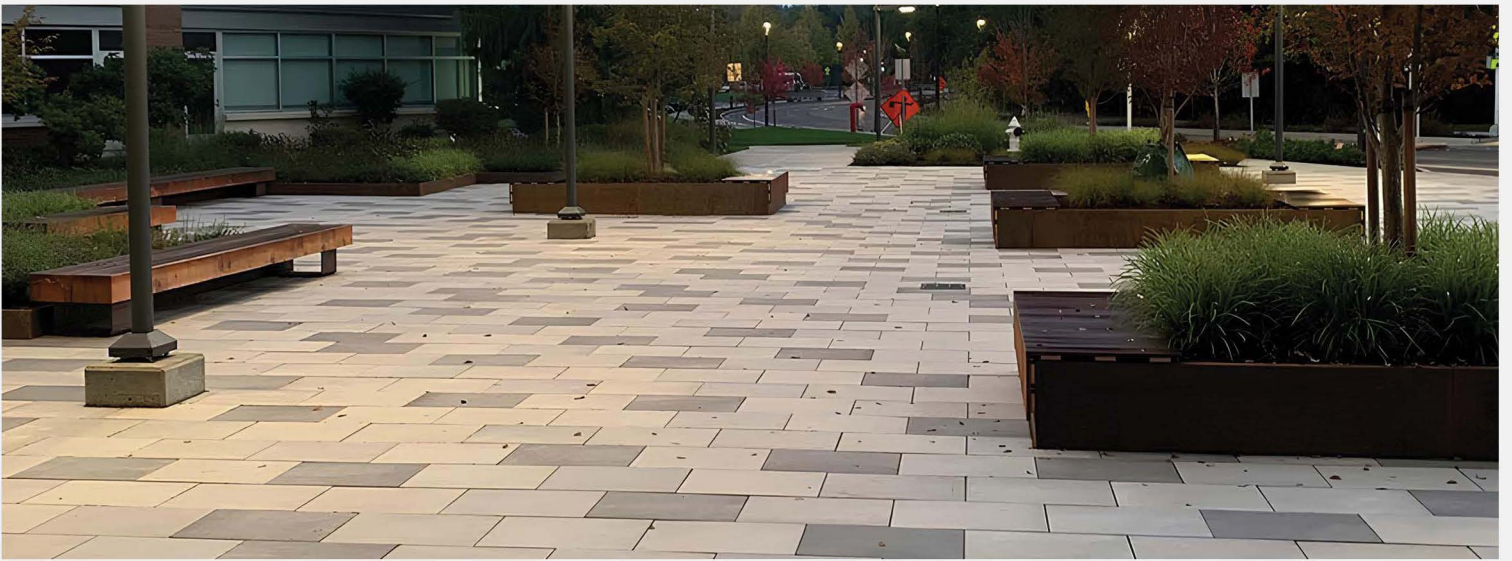
Piedmont Grey



Desert Natural



Pennstone



Cemento + Cenere + Sandalo



Pietra Bressa



River



Piedmont Grey



Sandy Island



Piedmont Dark

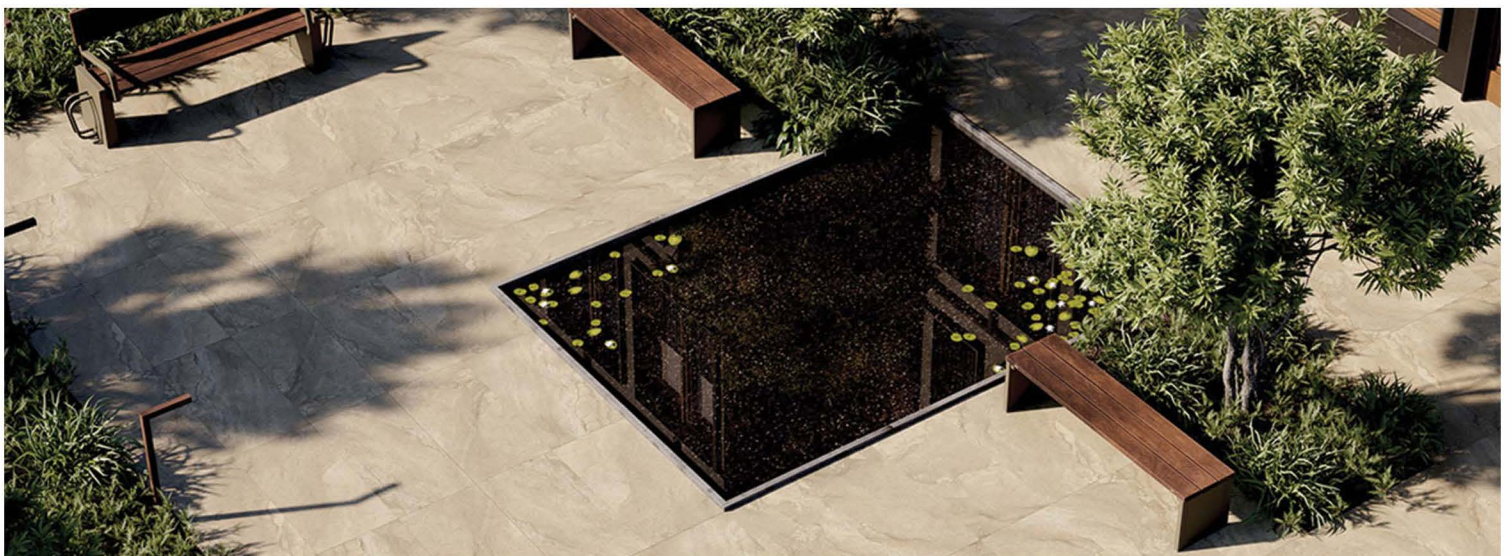
02 PATIO RESURFACING

Cover existing drab, cracked concrete with an elegant, stain resistant surface. Quick and simple installation using Archatrak stackable rubber support pads.

- Install over new or existing concrete - damaged or cracked.
- Perfectly level surfaces.
- Precisely spaced pavers.
- Low maintenance.



Soul Walnut

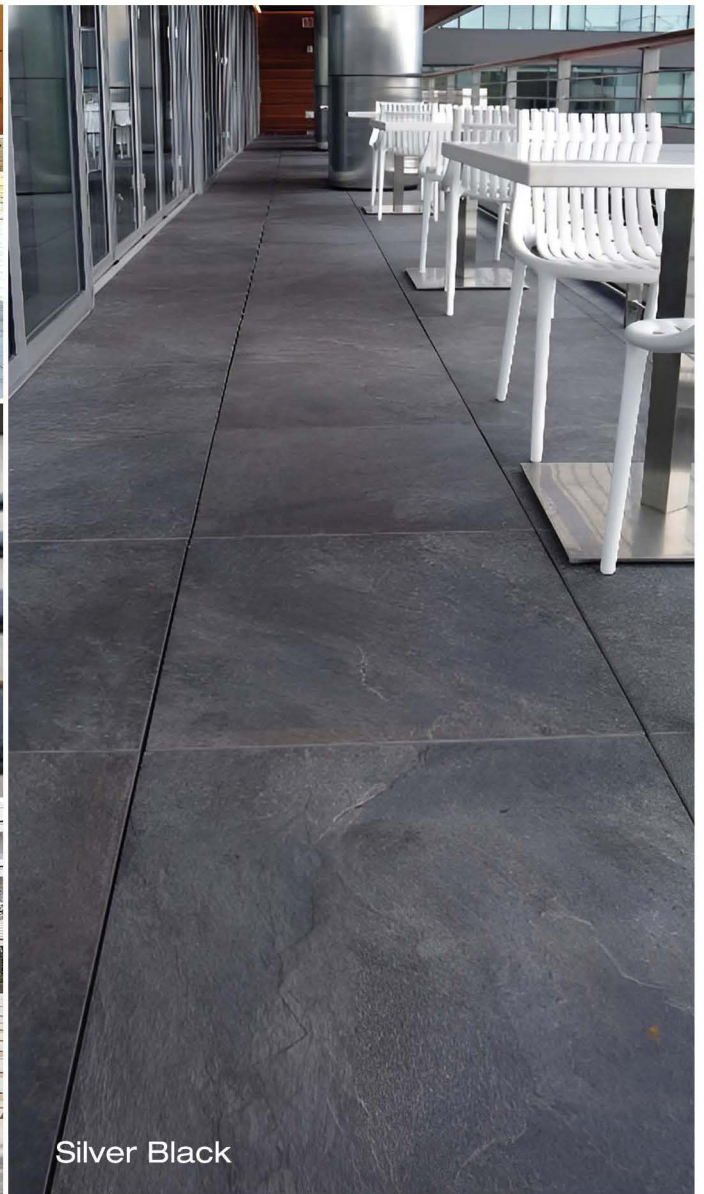


Desert Natural

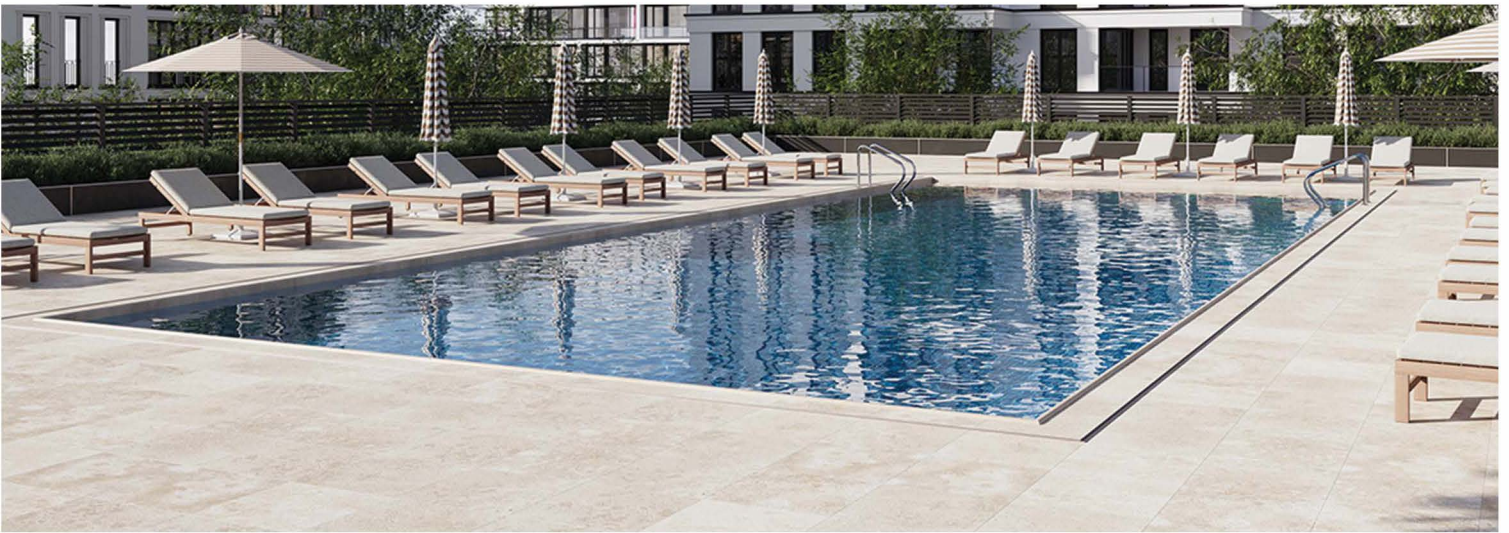
03 HOTELS & ROOFTOP HOSPITALITY VENUES

Create outdoor surfaces with elegance and style for rooftop bars, restaurants, swimming pools, outdoor lounges and other social gathering spaces. Pedestal supported porcelain pavers coupled with Archatrak 'SpanSafe' steel plates or 'SpanTrak' FRP grating panels offer uncompromising style and protection against accidental damage or wind uplift of pavers.

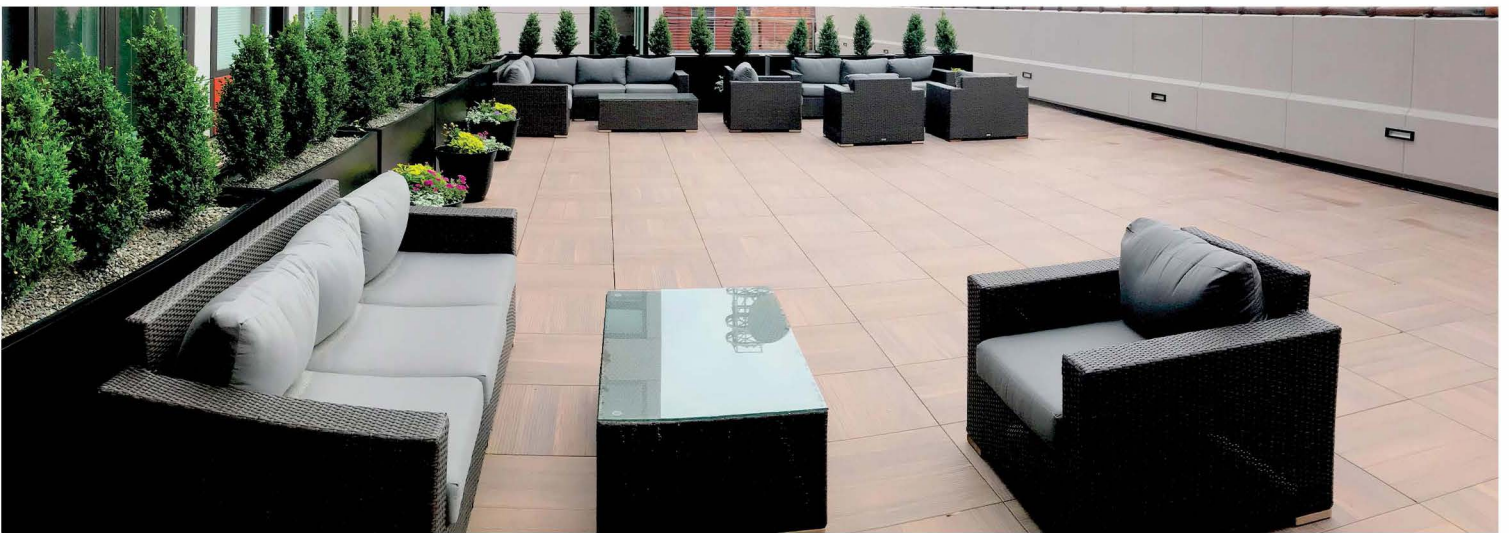
- Classically elegant surfaces with extensive color options
- Stain resistant, fade resistant wear resistant, non-combustible.
- No wood or steel bearer support structures required.
- Ultra-low maintenance



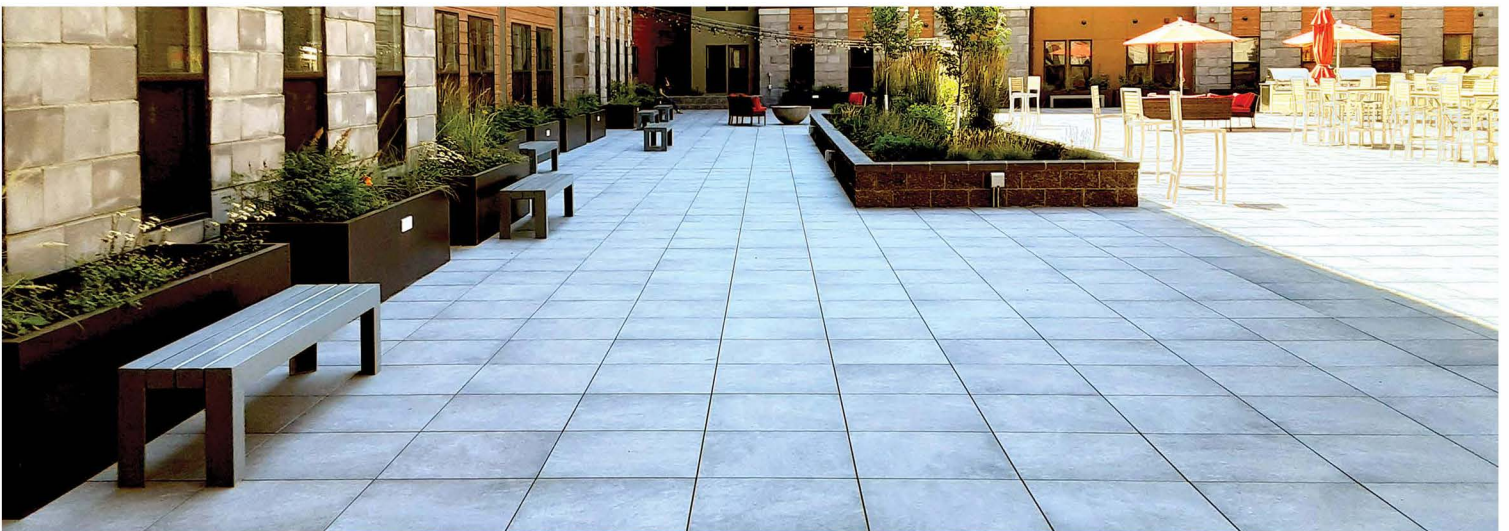
Silver Black



Travertine Crema



Lapacho

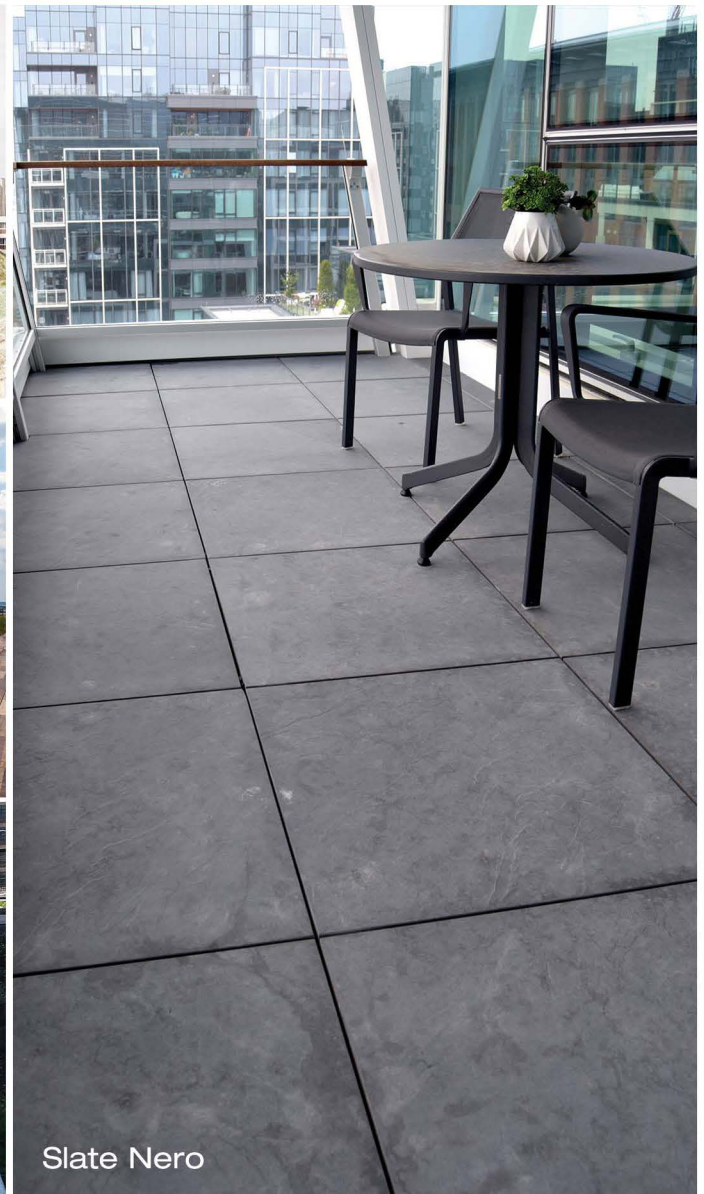
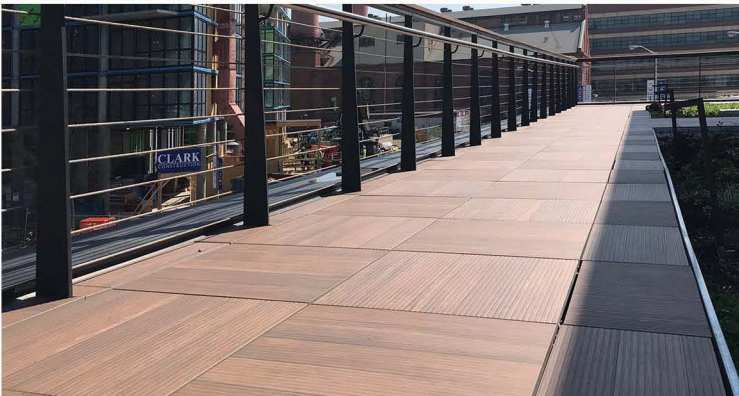


Bluestone

04 ROOF DECKS, TERRACES & BALCONY FLOORING

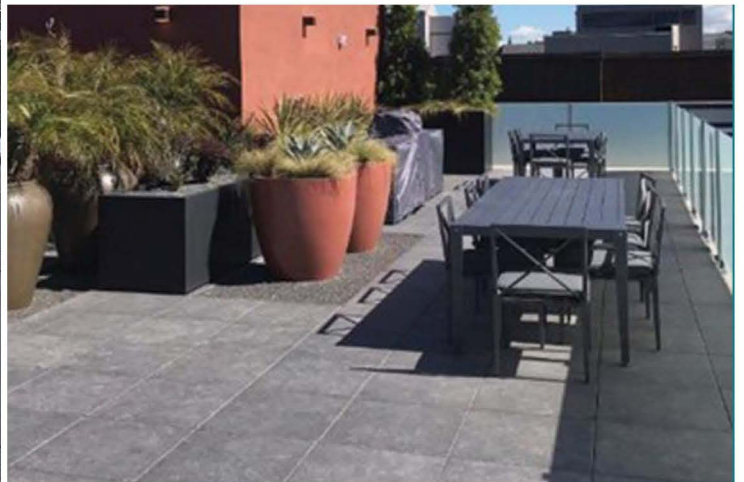
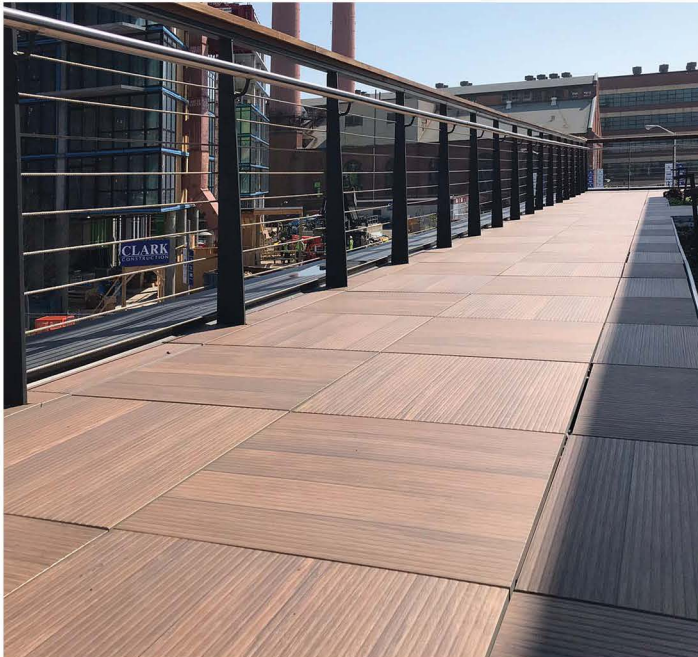
Make use of valuable rooftop space with elegant, lightweight porcelain pavers. Easily retrofit over existing rooftops using adjustable height paver supports.

- No need for wood or steel support structures.
- Completely cover ductwork, piping, conduits and surface irregularities.
- Ensure perfectly level surfaces.
- Avoid damage to waterproof membranes.
- Combine with 'Incendio' steel pedestals for totally non-combustible decks.



04.01 Pedestal Supported Pavers

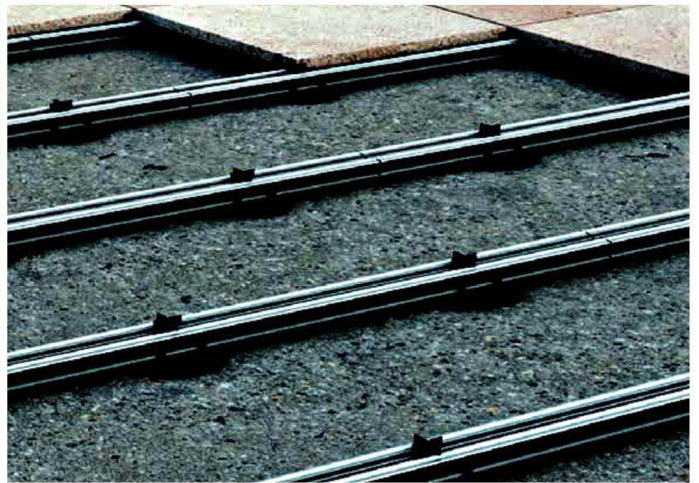
Porcelain pavers not exceeding 24" x 24" are supported by height adjustable pedestals placed at each corner only (additional pedestals are required for larger dimensions). Stackable rubber pads are typically used at lowest deck heights.



04.02 Rail Supported Porcelain Planks

Plank style porcelain pavers are laid over aluminum rails supported by adjustable height pedestals. Used for porcelain planks less than 16" wide where a pure pedestal support system would require an excessive number of pedestals and/or incur difficulties in placement of the pedestals.

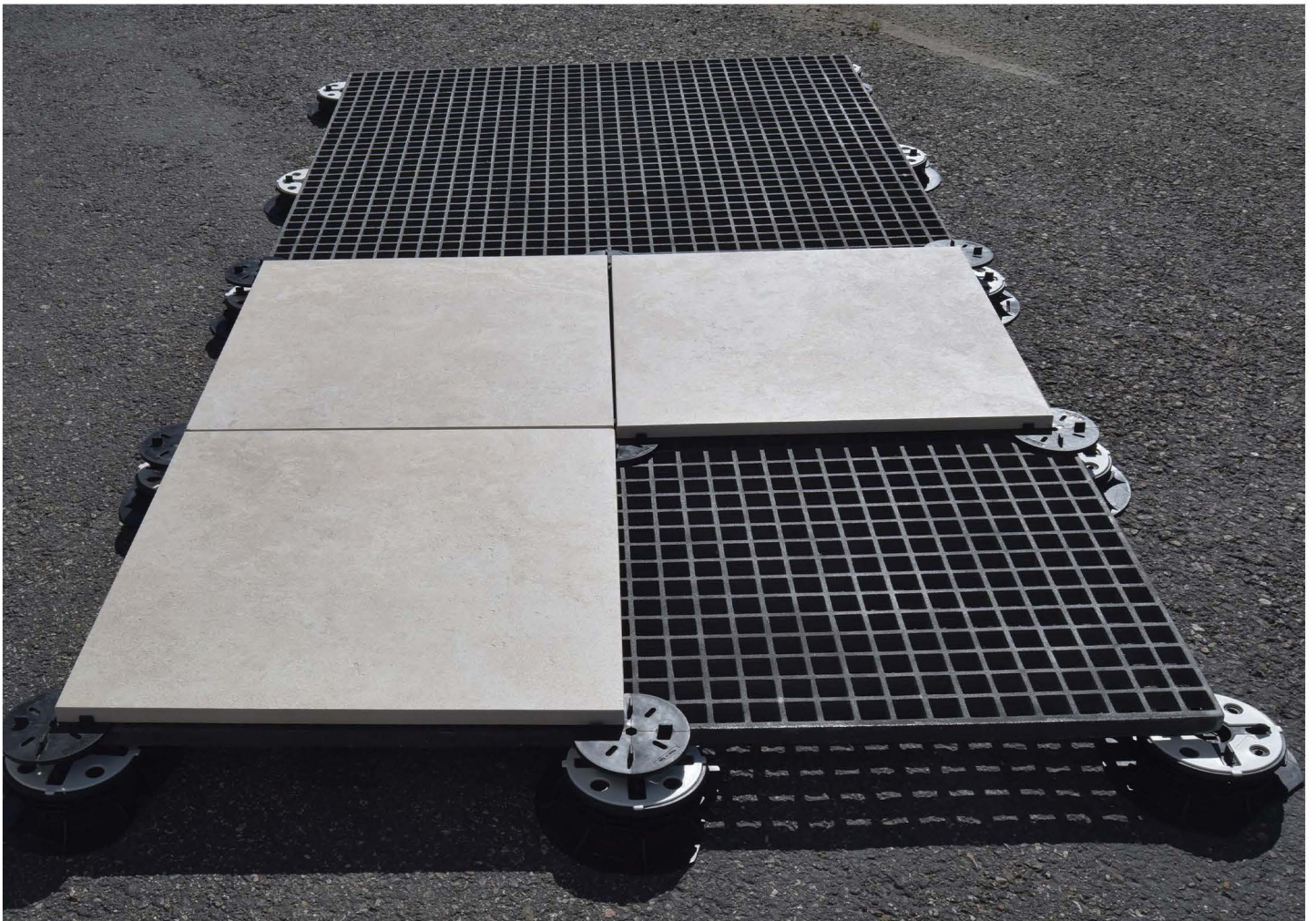
- No need for wood or steel support structures.
- Completely cover ductwork, piping, conduits and surface irregularities.
- Ensure perfectly level surfaces.
- Avoid damage to waterproof membranes.
- Combine with 'Incendio' steel pedestals for totally non-combustible decks.



04.03 FRP Grating Supported Pavers

Porcelain pavers are laid directly over Archatrak 'SpanTrak' FRP grating panels which in turn are supported by Archatrak 'Prime' pedestals. Archatrak ¼" thick rubber support pads with inbuilt spacer tabs are laid between the pavers and the grating panels to provide precise spacing between pavers and minimize noise transmission.

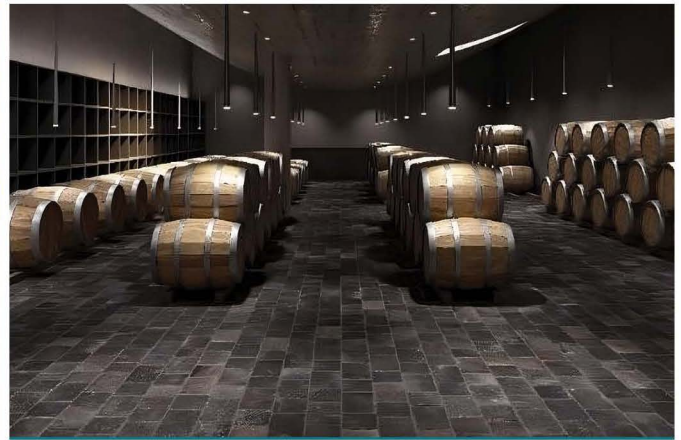
Used particularly in commercial applications with high usage and high pedestrian traffic and at elevated deck heights where safety is of critical importance.



05 PORCELAIN COBBLESTONES

Recreate the classic beauty of centuries old European stone cobblestone pavements with rustic look porcelain cobbles.

- Precisely dimensioned for faster, easier installation.
- Thinner and lighter than stone or concrete pavers
- Rustic textured surfaces, distressed edges, heritage colors, subtle tones and shading.
- Frost, stain and wear resistant.



06 INSTALLATION OPTIONS

The unique combination of strength, density, light weight, and thin profile of Archatrak T20 porcelain pavers provides extensive versatility in installation with both elevated and on-grade applications.

DRY INSTALLATION ON SAND/GRAVEL BEDS

- For broad area landscaping, plazas, terraces.
- Pavers are laid directly over a well compacted base of crushed rock and sand.

THINSET & GROUT OVER CONCRETE SLABS

- For vehicular and high traffic on-grade landscaping and walkways.
- Pavers are laid with mortar or approved adhesive over a reinforced concrete base and grouted.

ELEVATED ON ADJUSTABLE HEIGHT PEDESTALS

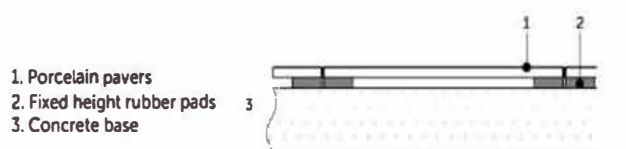
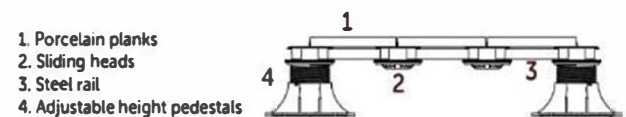
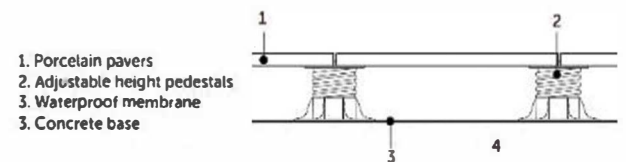
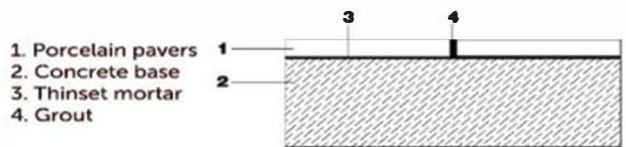
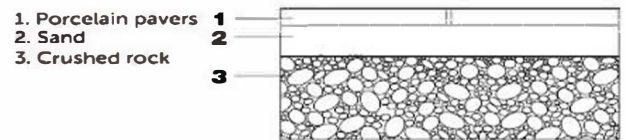
- For elevated decks on rooftops and other hard, stable surfaces with deck heights up to 30" or more.
- Adjustable height pedestals are placed under each corner of the pavers and sides where lengths exceed 24".

ELEVATED ON PEDESTAL SUPPORTED RAILS

- For elevated decks on rooftops and other hard, stable surfaces with plank style pavers, 16" or less in width.
- 8' long steel rails are laid over adjustable height pedestals. Pavers are laid on sliding heads at each corner and along sides at intervals not exceeding 24".

ELEVATED ON FIXED HEIGHT RUBBER PADS

- For existing concrete resurfacing at elevations less than 1.5".
- Pads are placed under each corner of the pavers and stacked as required to ensure a level surface. Shimms provide minor height adjustment and prevent rocking. Transition to adjustable height pedestals at heights exceeding 1.5".



07 SITE SPECIFIC SOLUTIONS

WIND UPLIFT

Any elevated paving laid without adhesives or other secure fixing to the substrate will be subject to the force of wind, with the risk in some cases of the pavers becoming airborne.

Archatrak 'SpanSafe' steel protection plates offer enhanced resistance to wind uplift of porcelain pavers installed on pedestal supported decks. The pavers are first bonded to the steel trays with beads of adhesive applied at each corner. The plates are then secured to the corners of "Incendio" steel pedestals with a screw and washer assembly.



Testing in accordance with ASTM E330 showed that the Archatrak wind uplift mitigation for T20 porcelain pavers system can provide wind uplift resistance up to 183 lb.psf.

SHOCK PROTECTION

While Archatrak T20 porcelain pavers are exceptionally durable, dense and rigid, they can nevertheless suffer damage due to mishandling or careless treatment. In elevated decking installations, and especially in commercial applications with high pedestrian traffic or popular public venues, the shock resistance of porcelain pavers must always be taken into consideration. If tools, heavy furniture or other heavy objects are dropped on the T20 pavers from a significant height, chips, scratches, surface damage and/or cracking and breakage may occur.

In installations where hard, heavy objects are likely to be in use or where floor heights exceed 4", especially in high traffic commercial locations, protection sheets or panels should be installed on the underside of the pavers to mitigate the risk of damage or injury, should any cracking or breakage of pavers occur.

Archatrak offers several solutions for installing under T20 pavers depending on the application.

'SHOCK CONTROL 2.0'

A flexible, self-adhesive, fiberglass reinforced sheet, pre-cut to cover the underside of the pavers is adhered to the underside of the T20 pavers.

After peeling off the protective backing, the sheet is pressed onto the underside of a dry paver.



'SPANSAFE' STEEL SHEETS

Galvanized steel sheets are laid over the pedestals before installing the T20 pavers. Plates used with Archatrak Prime pedestals have lobes at each corner with cut-outs for the spacer tabs on the pedestal heads, providing an extra level of security against movement of the plates if paver breakage occurs. 1/16" thick rubber shims can be placed under the corners of the pavers to minimize noise transmittance.



'SPANTRAK' FRP GRATING PANELS

FRP mesh grating laid on pedestals. The porcelain pavers are typically laid over 1/4" thick rubber pads with inbuilt spacer tabs to provide the required paver spacing and minimize noise transmittance.



SNOW MELT

The Archatrak 'Heatizon' snow melt system simply and efficiently maintains a snow free surface on pedestal supported T20 porcelain paver installations – commercial or residential.

Insulated electrical heating cables are run along V-shaped channels pressed into aluminum panels which are installed under the pavers. A sheet of polyurethane foam attached to the underside of the aluminum sheets minimizes heat loss under the system.

The 'Heatizon' snow melt system requires only 1 3/4" min. clearance under the pavers for the panels, insulation and drainage.

Heating can be restricted to single pavers or even part of a pavers and the area can be as large as required, subject only to the electrical supply connection.



08 SPECIFICATIONS

Archatrak T20 porcelain pavers are manufactured in several locations. Technical characteristics typical of production across manufacturing facilities in which Archatrak porcelain pavers are produced, are provided below. Please contact us for technical information on any specific colors or sizes.

CHARACTERISTIC		TEST METHOD	VALUE
Thickness			3/4"
Weight			9 lb/sq.ft
Water absorption		ISO10545-3	<0.1%
Breaking strength		ISO 10545-4	> 2200 lbf
Modulus of rupture		ISO 10545-4	> 7000 psi
Static load capacity *	Center Side Side Center Diagonal	EN 12825	>1700 lbf > 1200 lbf > 1500 lbf
Bending strength		EN1339	Class 14
Impact resistance		ISO 10545-5	>0.55
Resistance to abrasion		ISO 10545-6	conforms
Resistance to abrasion		ISO 10545-6	conforms
Frost resistant		ISO 10545-12	resistant
Resistance to thermal shock		ISO 10545-9	resistant
Resistance to chemicals		ISO 10545-13	UA
Resistance to acids & alkalis		ISO 10545-13	ULA/UHA
Resistance to staining		ISO 10545-14	Class 5
Fire resistance		EN3501-1	A1-A1 FL
Barefoot ramp test		DIN 51097	A+B+C
Shod ramp test		DIN 51130	R11
Static coefficient of friction		ASTM C1028-2007	>0.6 wet >0.6 dry
Slip resistance		DM236/89 B.C.R.A.	>0.40

*Average values compliant with relevant standard

** 24" x 24" pavers



ARCHATRAK INC.

 866 206 8316

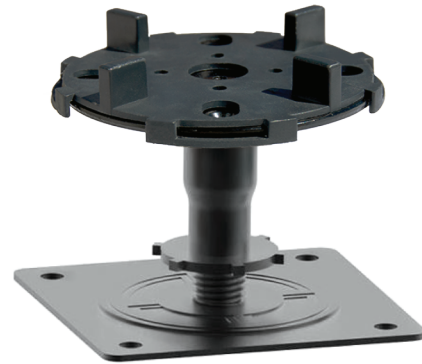
 www.archatrak.com

 solutions@archatrak.com

Archatrak 'Incendio' Pedestal

Adjustable height, all steel, corrosion resistant and non-combustible pedestal with fire resistant polypropylene head cap fitted with spacer tabs. Seven pedestal models cover the height range from 1" to 19 1/4". Incendio pedestals are supplied as fully assembled units with base and screwed columns. The plastic head cap is simply snapped onto the head of the pedestal.

- Non-combustible – won't catch fire, create smoke, or spread flames.
- Screwed columns provide continuous incremental height adjustment.
- Electrophoretic coating provides long term corrosion resistance.
- Locking ring ensures pedestals are secured at desired height.
- Snap on polypropylene head cap with inbuilt spacer tabs.
- Mild steel construction passes NFPA 220 criteria.
- Seven pedestals span the range 1" to 19 1/4".
- Added threads to secure wind uplift bolt.
- High load bearing - over 21,000 lb.
- Wider 3/16" pedestal head tab creates larger gap between pavers resulting in better pressure equalization during wind events.

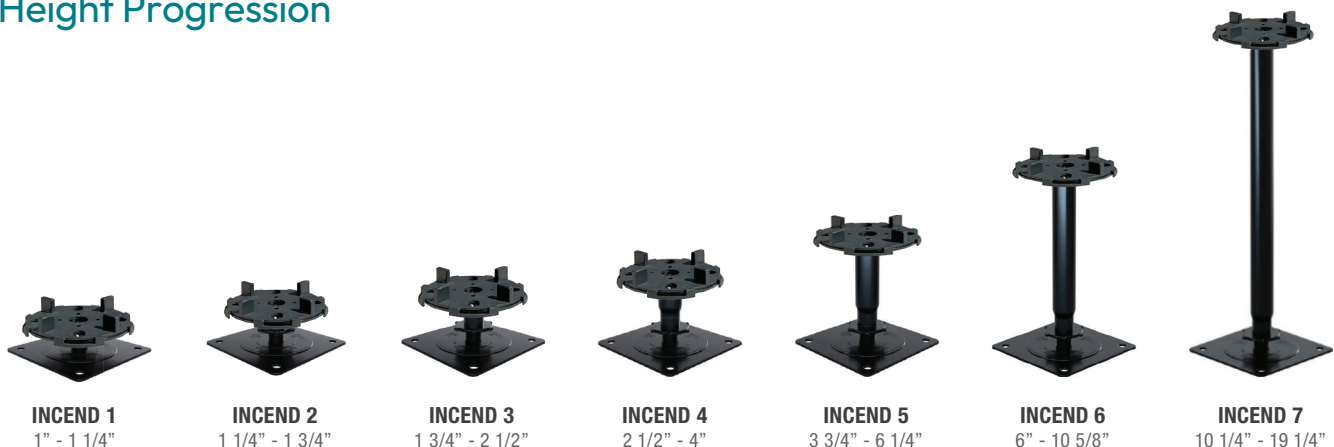


'INCENDIO' PEDESTAL

Specifications & Testing

PROPERTY	DESCRIPTION	SPECIFICATION
Pedestal Material	Body	Mild Steel
Head Material	Head	Fire Resistant Polypropylene
Height Range	Continuous incremental adjustment	1" - 19 1/4"
Dimensions	Head	3 3/4" diameter
	Spacer tabs (inbuilt)	1/2" high, 5mm or 3/16" thick
	Central column	2 mm thick steel
	Base	4" x 4"
Max. Compressive Load		Over 21,000 lb.
Combustibility at 750°C	ASTME 136	Pass
Warranty		3 years

Height Progression



INCEND 1
1" - 1 1/4"

INCEND 2
1 1/4" - 1 3/4"

INCEND 3
1 3/4" - 2 1/2"

INCEND 4
2 1/2" - 4"

INCEND 5
3 3/4" - 6 1/4"

INCEND 6
6" - 10 5/8"

INCEND 7
10 1/4" - 19 1/4"



- Snap on polypropylene head cap. Grind off excess spacer tabs as needed.
- Head fitted with tapped hole for Archatrak wind uplift mitigation system.
- Rotate column to adjust height. DO NOT overextend.
- Tighten locking ring when desired height has been set.
- Install buffer pad (part# shockpad50.1001) under pedestal if specified.

Wind Uplift Mitigation System for Porcelain Pavers

The Archatrak wind uplift mitigation system utilizes Incendio pedestals with a tapped head to securely hold down both 2cm and 3cm thick porcelain pavers onto the pedestal supports. Incendio tapped head steel pedestal provide much superior hold down capability compared with plastic pedestals with similar screw and washer assemblies as the screw is tightly secured into the threaded metal head. The hold down system is slightly different for 3cm paver vs. 2cm pavers.



T20 (2cm thick) porcelain pavers

Pavers are bonded on site to Archatrak ‘SpanSafe’ galvanized, powder coated steel trays with beads of Chemlink M1 or 3M 550 adhesive applied to raised quadrants at each corner of the pavers.

The paver and plate assemblies are placed over Incendio steel pedestals which feature tapped heads to accept stainless steel hold down screws. A stainless-steel washer is inserted at each corner of the pavers in the space between the underside of the paver and the top of the steel plate. The hold down screw is inserted through the center of washer and screwed down tightly, catching the corners of the four plates which rest on the pedestal head and ensuring the plates are held firmly to the pedestal head.



T30 (3cm thick) porcelain pavers

A small semi-circular kerf is pre-cut in each corner of the pavers to house custom-made stainless steel hold-down washers.

The kerfed pavers are placed over Incendio steel pedestals which feature tapped heads to accept stainless steel hold down screws. The hold-down washers are slotted into the kerfs, catching the corners of the four pavers which rest on the pedestal head. The hold down screw is inserted through the center of the washer and screwed down tightly, securing the pavers firmly to the pedestals.

Special Note with Porcelain Paver Installations

All pavers must be butted as tightly as possible against tabs on the pedestal heads.

A solid edge restraint is required around all sides of the deck. Ensure there is no space exceeding 3/16” between the edge of the pavers and the restraining walls on all sides of the deck.

When laying 2cm porcelain pavers where deck heights exceed 4”, appropriate reinforcement FRP grating panels, self-adhesive sheets or protection plates should be installed on the underside of the pavers in case of damage due to careless use or accidental impact with heavy tools, heavy or other hard objects. Archatrak Spansafe metal plates, Shock Control 2.0 self-adhesive sheets and Spantrak FRP panels are available for this purpose.

Archatrak Wind Uplift Mitigation - 2cm Porcelain Pavers

WIND UPLIFT MITIGATION

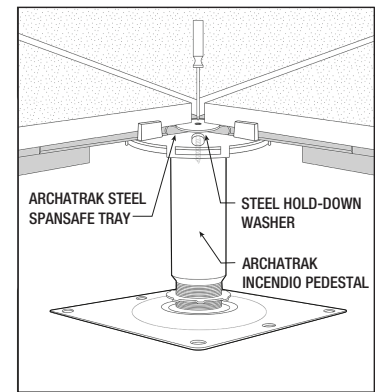
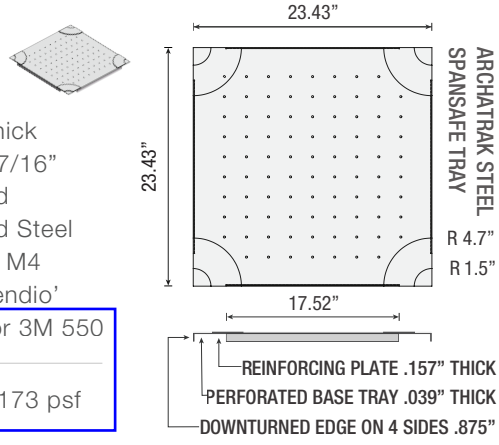
Wind uplift of porcelain pavers laid over a pedestal system can be mitigated by securing the pavers such that they are held together in a contiguous array. With 2cm pavers, bonding the pavers to Archatrak 'Spansafe' steel wind uplift mitigation plates and then securing the plates tightly to the heads of 'Incendio' steel pedestals with a screw, can create the required array. This method of mitigating wind uplift offers the benefit of:

- Steel pedestals with tapped heads ensures hold down screws cannot pull out when subject to strong uplift forces as can occur with plastic pedestals.
- Steel plates secured at each corner provide superior break through protection.
- Pavers can be removed if necessary by moving the washers sideways.
- Steel pedestals enable construction of totally non-combustible decks.
- Pavers only require bonding to a small area of the flat corners of the steel plates.
- Pedestal bases can be adhered to the substrate for more extreme uplift protection.



Specifications

SpanSafe Tray	Steel 1.5mm thick
Size	23 7/16" x 23 7/16"
Corrosion Protection	Powder Coated
Hold Down Washer	Powder Coated Steel
Screw	Stainless Steel M4
Pedestals	Archatrak 'Incendio'
Bonding Adhesive	Chemlink M1 or 3M 550
Wind Uplift Test	ASTM 330 173 psf



If 2cm system to be used, provide adhesive/sealant material as noted - Socotec

Installation Guidelines

1. Bond Archatrak 24" x 24" porcelain pavers to the raised quadrants at each corner of the Spansafe steel trays with beads of either Chemlink M1 or 3M 550 adhesive, making sure that the trays are accurately aligned with the pavers and are not overhanging the edges of the pavers. Allow the adhesive to cure fully.
2. Begin the deck installation by laying the first row of paver and tray assemblies with the corners of the trays resting on the heads of the Incendio pedestals.
3. Starting now on the second row, lay the first paver/tray assembly, and where the corners of three steel trays meet on the pedestal head, loosely insert the steel washer into the slot between the paver and steel tray.
4. Insert the stainless screw through the washer and into the tapped head of the pedestal and secure only loosely.
5. Maneuver the next paver and tray into position, making sure the washer lies in the gap between paver and steel tray. Continue laying pavers in this manner along the row, constantly checking levels of the deck surface and making sure pavers are butted tightly against the spacer tabs on the pedestal heads.
6. Lay the remainder of the deck row by row, in a similar manner.
7. After ensuring the deck is level and no pavers are rocking on any pedestal, insert a hex key into the gap where 4 pavers meet and tightly secure the steel trays to the pedestal heads.

Archatrak Wind Uplift Mitigation - 3cm Porcelain Pavers

Wind uplift of porcelain pavers laid over a pedestal system can be mitigated by securing the pavers such that they are held together in a contiguous array. With T30 3cm pavers, steel washers inserted into small semicircular kerfs cut in each corner of the pavers and secured tightly to the heads of 'Incendio' steel pedestals with a screw, can create the required array. This method of mitigating wind uplift offers the benefit of:

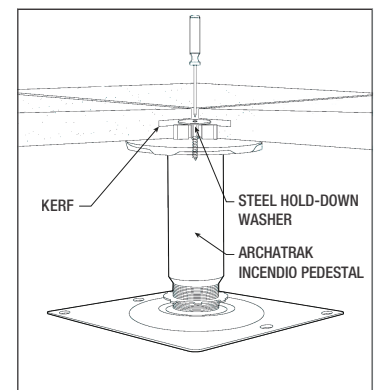
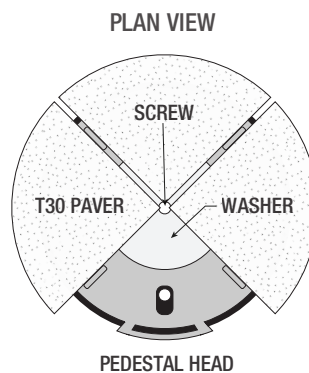
- Steel screw in steel pedestal provides superior hold down vs. plastic pedestals.
- No additional components needed other than a screw and washer.
- 3cm pavers which are 44% heavier than 2cm pavers.
- Relatively simple installation procedure.
- No adhesives needed and no waiting for adhesives to cure.
- Individual pavers can be removed for under deck maintenance.
- No visible fixing devices on the surface of the deck.
- Total non-combustibility.



Specifications

Hold Down Washer	Stainless Steel
Screw	Stainless Steel M4
Pedestals	Archatrak 'Incendio'

Wind Uplift Test	ASTM 330	270 psf
------------------	----------	---------



Installation Guidelines

1. A small semicircular kerf approx. 1/8" thick is cut in each corner of Archatrak 3cm T30 porcelain pavers, 9/16" from the underside of the paver and extending approx. 1" deep into the corner. Contact us for advice on a cutting tool that can be used for this purpose.
2. Begin the deck installation by laying the first row of pavers on the Incendio pedestals, ensuring that all pavers are butted tightly against the spacer tabs on the pedestal heads.
3. Starting now on the second row, lay the first paver, and where the corners of three pavers meet on the pedestal head, loosely insert the steel washer into the slots in each corner of the three pavers.
4. Insert the stainless screw through the washer and into the tapped head of the pedestal and secure only loosely.
5. Maneuver the 4th paver into position, making sure the washer slots correctly into the kerfs of the pavers.
6. Continue laying pavers in this manner along the row, constantly checking levels of the deck surface and making sure pavers are butted tightly against the spacer tabs.
7. Lay the remainder of the deck row by row, in a similar manner.
8. After ensuring the deck is level and no pavers are rocking on any pedestal, insert a hex key into the gap where 4 pavers meet and tightly secure the pavers to the pedestal heads.