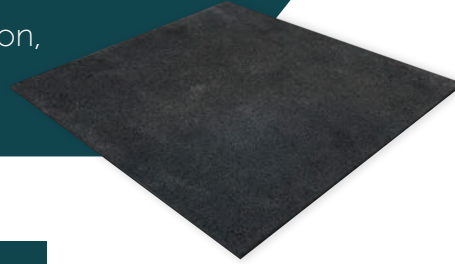


RUBBER SHOCK PADS

Use with pedestals for membrane protection, shock absorption and sound reduction.



ABOUT THESE PADS

Our shock pads are made from high grade SBR (styrene-butadiene) rubber granulate bonded with polyurethane.

DIMENSIONS

6" x 6" with 1/8" thickness

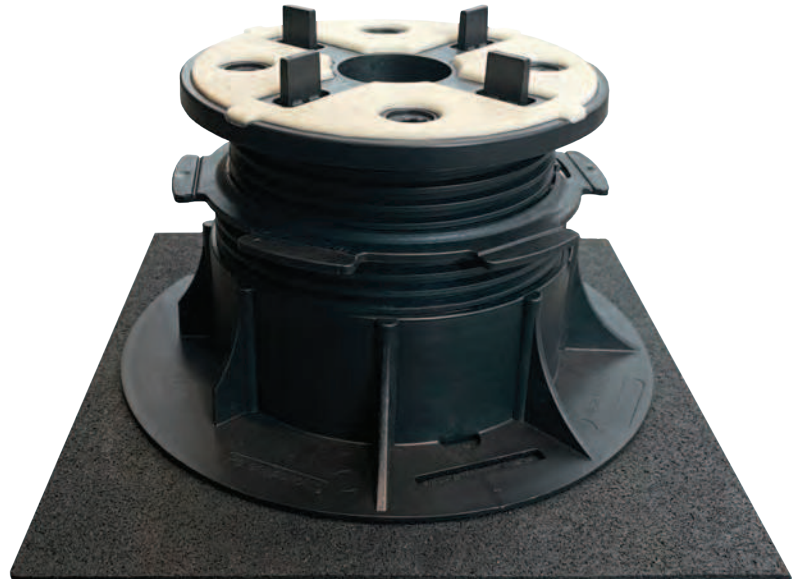
9" x 9" with 1/8" thickness

DECIBEL REDUCTION

AIRBORNE SOUND INSULATION
(D nT,w + C tr) - 49 dB

IMPACT SOUND INSULATION
(L' nT,w (C II)) - 46 dB

ΔL_w (impact improvement) - 18 dB
BS EN ISO 140-8:1998



Archatrak Inc.
2 Wisconsin Circle, Suite 700
Chevy Chase, MD 20815

866 206 8316
solutions@archatrak.com
www.archatrak.com